



## Charity Review

## Camillian Social Center Rayong

Review Date: Reviewers: July 10, 2015  
Manu Pensawnagwat MBA.  
Charity Head: Rev. Chaisak Thaisonthi : Director  
Address: 1/1 Soi Keeree, Huapong, Mueng, Rayong, Thailand 21150  
Telephone : 038-685-480, 038-691-480  
E-mail : [prcamillian@yahoo.com](mailto:prcamillian@yahoo.com)  
Website : <https://www.camillianthailand.org/organizations.html?id=6>  
Facebook: <https://www.facebook.com/csc.rayong/>

### Charity Purposes

HIV/AIDS infected and affected people in Thailand are still mistreated in Thai society widely due to wrong perception and the lack of knowledge of the people in addition to improper of education and prioritization of government sector to the HIV/AIDS issue. There is no event government HIV/AIDS Care Center in Thailand causing the spread of person infected and affected by HIV/AIDS is still high and those infected and affected people are discriminated and are improperly treated unfairly across the country.

Camillian Social Center Rayong is one of the few charities that is established in order to not only educate the correct knowledge base for Thai people but also to be a center that grants HIV/AIDS infected and affected children and adult by giving them a better quality of living, education, medical care and treatment under its three main centers detail following :

- Home for orphaned children living with and affected by HIV/AIDS where provides medical care and treatment, education, good quality of living with appropriate basic necessities and having access to the legal right to be deserved from governmental services equally for 58 children and youth.
- Independent Living Center for Youth (IDP), the Center is a pioneer center at Asian level for abandoned youth living with and affected by HIV/AIDS where currently giving its grant to 43 young people under care and support 24 youth to reintegrated with their society properly.
- Palliative Care Unit (PCU) where provides 40 beds to AIDS patients who are in poverty, homeless and were rejected by their own families and societies. The provision of the unit is to grant those patients with proper care and holistic treatment, a better quality of living, and an opportunity to be integrated with their family. Some of patients under care of PCU are disabled who are now living with the new expanded PCU called Garden of Eden. PCU has currently take care 46 adult patients, there are 19 infected and affected by HIV/AIDS patients living with disabilities.

Moreover, Camillian Social Center Rayong also has created its initiative a network of HIV/AIDS infected and affected people across the Eastern Seaboard region of Thailand in order to strengthen HIV/AIDS knowledge among its member societies, to prevent new infected people in the region in addition to philanthropic activities collaboration with local Buddhist temple, government and business sector as well as other minor

projects in year 2014.

Camillian Social Center Rayong has adopted a holistic approach to the response integrally addressing all aspect of HIV and AIDS. Camillian Social Center Rayong is a part of Saint Camillus Foundation of Thailand with its same NGO's registered number 8/2516. Any donation make to Camillian Social Center Rayong is entitled for tax deductibility by donation pay to Saint Camillus Foundation of Thailand.

### **Charity Background and History**

- **1992 "Baan Buntaojai"** which means to Home Relief was the first Camillian Social Center where take care HIV infected patients locating in Soi Rewadee, Tiwanon Rd. Nonthaburi. The home was the temporary resident of HIV/AIDS infected patients leading by Father Giovanni Contarin, an Italian priest.

The surrounded communities in the area strongly resisted "Baan Buntaojai activities with creating violence to the member of Baan Buntaojai due to lack of correct knowledge of HIV/AIDS and wrong understanding on HIV and AIDS. The disease is social stigmatization nation-wide on the then.

- **1996** Father Giovanni Contarin had decided to move the home to Rayong and it has been the initiative of Camillian Social Center Rayong, the Center had officially opened on January 29, 1996 on the donated land 5 rais with its 7 philanthropic projects aiming to providing help, education, nutrition, medical care and resident to abandoned children and youth who infected and affected by HIV/AIDS focusing on 8 provinces in the Eastern Seaboard of Thailand.

### **Description of Activities and Programs: -**

In 2014, there were seven projects operated by CSC Rayong as details following :

- **Home for orphaned children living with and affected by HIV/AIDS**, the home has been established since 1999 providing resident, medical care and treatment and education for children and youth whose parents were unable to take care due to poverty and/or lack of knowledge on taking care them properly in order to enable these children to have a better quality of life, to be able to access to proper care with medical treatment, and to promote physical, mental and spiritual development.

Currently, there are 58 children and youth who are under care of Home for Orphaned Children living with and affected by HIV/AIDS of CSC Rayong. Those children are able to be classified upon to their condition as follow:

Home for Orphaned children living with and affected by HIV/AIDS  
as at July 10, 2015

Condition	Quantity
HIV/AIDS Infected Children	38
HIV/AIDS Affected Children	20
Total	58

HIV/AIDS infected children mean to children have infected HIV/AIDS

HIV/AIDS Affected children mean to children are infected but their parents is HIV/AIDS infected.

**Source : from the interview with Father Chaisak Thaisonthi on July 10, 2014**

In 2014, CSC Rayong has obtained more 3 children who infected by HIV/AIDS, 2 children who affected and during the year there was one children passed away by unclassified disease which was not HIV/AIDS.

Statistic of Orphaned Children Living with and affected by HIV/AIDS

Narration	2009-2013	2014	Accumulated at December 2014
1. Number of newly admitted children with HIV	114	3	117
2. Number of newly admitted affected children	38	2	40
3. Number of children transferred to Youth Program	54	5	59
4. Number of passed away children	18	1	19
5. Number of children reintegrated with their families	40	7	47
6. Number of remaining children living with and affected by HIV/AIDS as at the end of 2014	45	37	

Source : CSC Rayong Annual Report 2013 page 10 and Annual Report 2014 page 5 (English version)

Home for Orphaned children living with and affected by HIV/AIDS or in another name "Child Care Center" is located 1/1 Soi Keeree, Huaypong Sub-district, Muang District, Rayong where is the main office of CSC Rayong.

**Independent Living Center (IDP)** for youth has officially been opened on August 7, 2006. The project is a pioneer center at Asian level for abandoned youth living with and affected by HIV/AIDS. Some youth have been transferred from Child Care Center due to their age. Currently, there were 11 female and 8 male living in the center. The center provide not only resident but also education, health care and medical treatment with create activities program on participation basis. Those youth are able to initiate activities project starting from gathering information, planning, implementation and mutual learning.

Statistics of Youth infected and affected by HIV/AIDS under care of Independent Living Center as at December 2014

Narration	2006-2013	2014	Accumulated as December 2013
1. Number of young people	43	0	43
2. Number of youth completed their education and reintegrated with society	24	0	24
3. Number of remaining youth at IDP	19	19	

Source : Annual Report 2013 and 2014 comparison.

**Palliative Care Unit : PCU**, the project aims to providing helping to HIV infected and AIDs patient accessing to medical care and treatment, the project with its 12 permanent staffs would provide holistic care which include physical, mental, social and spiritual in order to improve patients live quality and to return to their own social normally and happily. This project mainly focuses on the 8 provinces in the eastern seaboard region of Thailand. There are currently 426 adult patients with the collaboration between the Center and Social Workers of governmental hospitals who participate with the project regional-wide.

Palliative Care Unit Project operates in the area of main center in Rayong the project also provide shelter, nutrition food and medical care to infected patient age between 13-72 years and not only Thai but also migrant workers in the region.

**Palliative Care Unit : CPU**  
**Quantity of infected patient living in the Center year 2014**  
**age between 13-72 years**

Patient in year 2013	New comer year 2014	Passed away	Return to social	Balance
83	54	20	29	88

In the end of year 2012 CPU has developed another project "Help Prevent and Rehabilitate People Living with HIV and AIDS Patients from Camillian to Eastern Seaboard Communities with the collaboration and financial support from local National Office of Health Security in Rayong in order to develop physical, mental, spiritual and social capacity of people living HIV/AIDS patients focusing on the region PCU is located at Huaypong sub-district, Muang district in Rayong. The Unit has supported AIDS patients vulnerable Thai and migrant workers at the age range of 13-72 years.

**The Garden of Eden Project (CPU-Eden)**, the project has established in 2003 in order to facilitate with good preparation of people living with HIV/AIDS for smooth rehabilitation with society by temporary sheltering with farming area, handicraft with support of marketing, the earning from selling product would be returned to patients for self-supporting and/or preparing for reintegration with society. The project also provide and prepare consecutive health care, self-caring in order to prevent sickness due to immunodeficiency.

The Garden of Eden Project is located at 165/1 Moo 3, Nong Bua Sub-district, Ban Khai District, Rayong. The average age of patients living in CPU-Eden are between 16 to over 60 years.

Statistic of HIV/AIDS infected patient under care of Garden of Eden as at December 2014

Narration	2003-2013	2014	Accumulated as at December 2014
1. Number of patients living with HIV	391	0	391
2. Number of reintegrated PLHIVs	300	9	309
3. Number of PLIHVs referred to PCU with total death	51	0	51
4. Number of remaing PLHIVs at the end of the year	40	31	

Statistic of People Living with HIV and AIDS Patients  
at Camillian Social Center Rayong  
As at December 31, 2014

Narration	Carried forward from 2013	New	Death	Reintegrated into society	Transferred	Total remain
<b>Orphaned Children living with and affected by HIV/AIDS at the age of 2-19</b>						
Infected children	28	6	1	1	5	27
Affected children	17	2	0	0	0	19
<b>Youth at the age of 14-23</b>						
Infected youth	18	5	0	5	3	15
Affected youth	1	0	0	1	0	0
Adults living with HIV and AIDS patients	83	54	20	29	0	88
<b>Total</b>	<b>147</b>	<b>67</b>	<b>21</b>	<b>36</b>	<b>8</b>	<b>149</b>

Source : CSC Rayong's Annual Report 2014

#### Other significant projects in year 2014

##### **Educational Scholarship of children living with and affected by HIV/AIDS**

CSC Rayong has initiated the project in order to help those children in needs who live their own families, - the scholarship is 500 to 1,000 Baht a month supporting education to 112 children in year 2014. There were 219 children supported under this project for the last 15 years and 59 of this amount had graduated in diploma level.

##### **Eastern Network of People Living with HIV/AIDS Project**, is a network of local groups of PLHIVs

(People Living with HIV) in order to address problems faced by PLHIV and AIDS patients with the number of membership 18,862 members in 63 groups at the end of December 2014.

Year 2014 the project has joined with Thai Health Promotion Foundation by having people who live in Eastern Seaboard region as target to campaign the Zero AIDS-related deaths, Zero Discrimination and VCCT Campaign in local community. (VCCT is Voluntary Confidential Counselling and Testing.)

**Bridge of Hope Project**, the project has been supported by intra and inter country through the charity network since 2006, 559 donors from France granting 59 orphaned children and teenagers through CSC Rayong. Those orphans had kept contacting with their supporters consecutively whilst some donors had visited the orphans to share their activities.

**Holistic Service Center**, utilized by Network PLHIV in Thailand, the participatory form of services for PLHIV with the holistic approach to provide information, counselling in hospital and co-evaluation on health status of patients for transferring as well as monitoring health aspect, opportunistic infections and antiretroviral treatment has been applied for last 10 years.

23 Holistic Service Centers located in 6 provinces of Easter Seaboard region, the network had served for almost 4,104 cases of PLHIV with 3,940 adults and 164 children. The Holistic Service Center would monitor all patients on regularity basis with keep recording all medical and other relevant data for further planning to promote the development of health service policy for PLHIV. The approach would lead to the UNAIDS policy.

Mr. Manu Pensawangwat, a GBA's team member has visited Camillian Social Center Rayong on Friday 10 July, 2015 and received a warm hospitality form father Chaisak Thaisonthi, the Director of the center, Rev. Brother Wuttichai Boonbanlu and staff members of the center who have sharing valuable information related with HIV/AIDS situation in the working field as well as constructive opinion to improve and develop the present circumstance of PLHIVs.

From the two years annual reports 2013 and 2014 GBA's team has learned that the situation of HIV/AIDS in Thailand is as table below :

Statistic of HIV/AIDS Situation in Thailand

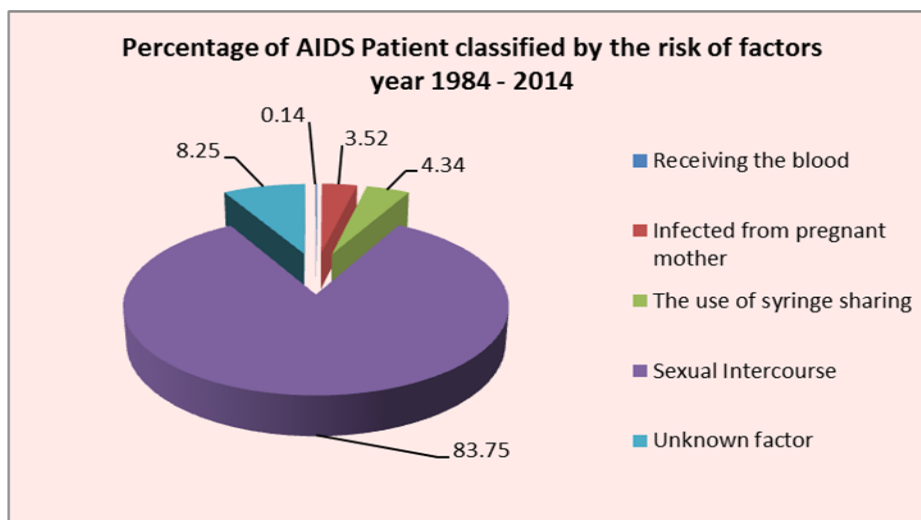
Narration	2012	2013	2014
Thai population at the end of the year	64,450,000	64,785,909	65,000,000
HIV/AIDS infected patient acumulated since 1984	1,157,589	1,200,000	1,588,621
HIV/AIDS infected patient reported by hospital	376,274	447,640	388,621
HIV/AIDS patient registered with obtain anti virus	212,426	234,729	310,000
Forcasting of new HIV/AIDS infected patient	9,473	8,959	8,030
HIV/AIDS patient in Rayong Province	9,312	10,012	N/A

Source : Annual Report of CSC Rayong year 2013 and 2014 comparison

We also learned that there are only three ways that HIV can contaminate to other as description below :

- 1 Sexual intercourse
- 2 The use of syringe sharing
- 3 Infected mother to child

The table below demonstrated the percentage of HIV/AIDS infected patient classified by the risk factors :



Source : The Situation of AIDS patient in Thailand as at October 31, 2014

Office of Epidemiology, Department of disease control, Ministry of Public Health

GBA's team also learned that HIV infection from infected mother to child are likely to decrease due to medical advances in the prevention of infection to child. There were 700,000 new born children infected HIV from their mother world-wide, in Thailand there were 30,000 children infected, of these 10,000 children have died. The key issue is those children who still alive are helpless children since early birth. As for uninfected children born from infected mother, those children were helpless causing 150,000 families affected by AIDS. The current usage of antiretroviral drugs to prevent infection from mother to child resulting the rate of infected children much reduced from that high to 2 000 children per year to approximately 300 children children per year. (Source : Chokpaibulkit, Kulgulya : Prof. Dr., When AIDS came up with the baby)

Camillian Social Center Rayong by Father Chaisak Thaisonthi, the Director of the center has presented 2 years backward annual report and audited financial statement for year 2013 and 2014. The foundation's annual

report has been also uploaded to its website on yearly basis.

Its audited financial statement has been audited by authorized auditor named Mr. Vichien Ratanaverojanavilai with his license number 3836.

GBA's team member has gained lot of impressive project activities information. Especially, the HIV/AIDS Awareness Campaign with collaboration of local Buddhist temples in Rayong. The cross-religion collaboration between the CSC Rayong and the Buddhist monk in the region is a good sign of initiative activity which shall be able to further potential joining activities such as local fund raising activities with the support of local officials and/or local business sector. GBA's team expect that CSC Rayong is able to maintain the breakthrough of the collaboration with the local Buddhist temple in order to strengthen the relationship, campaign and gain more local communities participation and support through the Buddhist monk and temple services to communities in the region.

From the latest audited financial statement year 2014 and comparing with CSC Annual Report the same year, GBA's team has found that 60 percentage of income gained in the year has been spend directly to 7 projects. In the year 2014, the administration expenses was at 38 percentage of income which included asset depreciation which is relatively high.

	<u>Baht</u>
Individual Support Domestic & Overseas	10,311,590
Corporates	2,405,433
Other Charities (Domestic & Overseas)	10,011,168
Fund Raising Activities	4,753,211
Local Government Grant	1,043,206
Bank interest	475,119
Religious activity	<u>222,930</u>
Total	<u><u>29,222,657</u></u>

Amount of Staff members and Volunteer

- Project staff members      21 persons
- General staff members      30 persons
- Volunteer                      6 persons

Project	Number of Beneficiary	Staffs	Direct cost to beneficiary	Utilities cost	Office management cost	Staff salary	Total
Care for HIV/AIDS orphaned children Project	46	16	2,409,834	797,495	146,979	2,150,424	5,504,732
Independent living Center	15	3	1,715,389	759,980	-	414,557	2,889,926
Garden of Eden	46	18	335,727	189,253	-	119,291	644,271
Education on HIV/AIDS Prevention	6,685	3	440,603	115,915	-	701,290	1,257,808
Eastern Network of PLHIVs	18,862	-	117,000	-	-	-	117,000
Educational Scholarship for orphaned children	123	1	840,909	-	-	69,586	910,495
Sponsorship for Orphaned Children	80	-	-	-	74,623	390,725	465,348
Total			5,859,462	1,862,643	221,601	3,845,873	11,789,580

<b>Thai Baht Financials</b>	<b><u>Baht</u> <u>Audited</u> <u>2014</u></b>	<b><u>Notional</u> <u>Donation</u> <u>2014</u></b>	<b><u>Notional time</u> <u>value</u> <u>volunteer</u> <u>2014</u></b>	<b><u>Total</u> <u>2014</u></b>
<b>Asset</b>				
<b><u>Current Asset</u></b>				
Cash and equivalent cash	9,658,521			9,658,521
Temporary Investment	11,037,638			11,037,638
Total current asset	20,696,159			20,696,159

<b><u>Income</u></b>	<b><u>Audited</u> <u>2014</u></b>	<b><u>Notional</u> <u>Donation</u> <u>2014</u></b>	<b><u>Notional time</u> <u>value</u> <u>volunteer</u> <u>2014</u></b>	<b><u>Total</u> <u>2014</u></b>
<b>Receipts and Outgoings</b>				
Individual Support Domestic & Overseas	10,311,590		1,440,000	10,311,590
Corporates	2,405,433			2,405,433
Other Charities (Domestic & Overseas)	10,011,168			10,011,168
Fund Raising Activities	4,753,211			4,753,211
Local Government Grant	1,043,206			1,043,206
Bank interest	475,119			475,119
Religious activity	222,930			222,930
Total income	29,222,657	-	1,440,000	30,662,657

**OPERATION : PROJECT EXPENSES**

	3,354,308			3,354,308	
Management & salary	2,150,424			2,150,424	
Project Expenses	5,504,732	19%		5,504,732	18%
<b>HIV/AIDS Child Care Center</b>	2,475,369			2,475,369	
Management & salary	414,557			414,557	
Project Expenses	2,889,926	10%		2,889,926	9%
<b>Independent Living Center</b>	524,980			524,980	
Management & salary	119,291			119,291	
Project Expenses	644,271	2%		644,271	2%
<b>Garden of Eden Project</b>	3,731,092			3,731,092	
Management & salary	2,107,756			2,107,756	
Project Expenses	5,838,848	20%		5,838,848	19%
<b>Palliative Care Unit Project</b>	556,518			556,518	
Management & salary	701,290			701,290	
Project Expenses	1,257,808	4%		1,257,808	4%

**HIV/AIDS Prevention Project**

	840,909			840,909
Management & salary	<u>69,586</u>			<u>69,586</u>
Project Expenses	<u>910,495</u>	3%		<u>910,495</u> 3%
<b>Educational Scholarship</b>	117,000	0%		117,000 0%
<b>Network of HIV/AIDS Project</b>	74,623			74,623
Management & salary	<u>390,725</u>			<u>390,725</u>
Project Expenses	<u>465,348</u>	2%		<u>465,348</u> 2%
<b>! All Project expenses</b>	<u><b>17,628,427</b></u>	60%	<u>-</u>	<u><b>17,628,427</b></u> 57%

**MANAGEMENT & ADMIN. EXPENSES**

Public Relation expenses	1,883,605	6%		1,883,605 6%
Management & Admin expenses	1,142,033	4%		1,142,033 4%
maintenance	1,393,697	5%		1,393,697 5%
Donation to other charities	440,803	2%		440,803 1%
Management & salary	1,901,001	7%		1,901,001 6%
Other expenses	665,205	2%		665,205 2%
Asset Depreciation	<u>3,814,687</u>	13%		<u>3,814,687</u> 12%
	<u>11,241,030</u>	38%		<u>11,241,030</u> 37%
Total Expenses	<u><u>28,869,458</u></u>	99%	<u>-</u>	<u><u>28,869,458</u></u> 94%

**Less Volunteer time value**

1,440,000 1,440,000

Construction & Equipment	941,310	3%		941,310 3%
New vehicle	<u>800,068</u>	3%		<u>800,068</u> 3%
Total Capital Expenditure	<u>1,741,378</u>	6%		<u>1,741,378</u> 6%
Cash deficit	<u>- 1,388,179</u>			<u>- 1,388,179</u>

% of Operation expenses	60%
% of Overhead	38%
Child Care Center cost per child	119,668 Baht
Independent Living Center cost per t	192,662 Baht
Garden of Eden cost per head	10,067 Baht
PCU project cost per head	100,670 Baht
HIV/AIDS Prevention cost per head	188 Baht
Educational Scholarship cost/studen	7,402 Baht
Network of HIV/AIDS Project cost/hc	6 Baht
Sponsorship of foster parent cost	5,817 Baht